



# VIDEO P L E X™

HIGH QUALITY MPEG-2 PLAYBACK

## Functional and Powerful

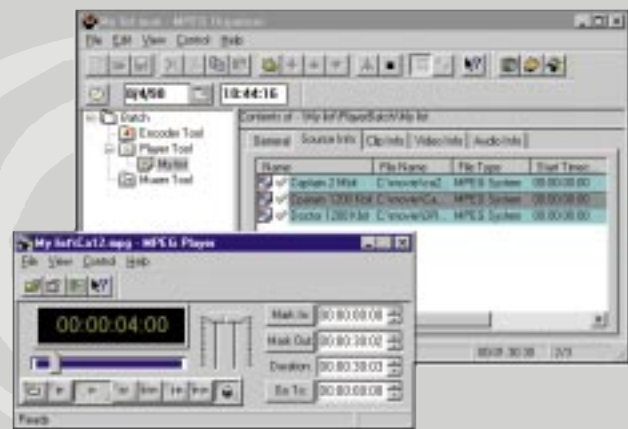
VideoPlex delivers playback of professional MPEG-1 and MPEG-2 streams at up to 15 Mbps, replacing laser disks and linear tapes such as SVHS and Betacam with superb digital video. VideoPlex also features genlock input with video pass-thru for ad insertion and other professional video applications. It supports Windows 95 and Windows NT. It comes in PCI single slot layouts with Composite (BNC) and S-Video (mini-DIN) output connectors. VideoPlex decodes MPEG streams to NTSC-M, NTSC 4.43, PAL-M, and PAL B/G output formats with balanced and unbalanced stereo audio for professional sound and video.

## The Most Advanced Tools

The Real Time Decoder (RTD) Software Development Kit (SDK) provides a complete set of software tools for developing digital video playback applications. Developers and OEMs can join Progression, Optibase's Developers Support Program, and enjoy a wide range of software components designed for state-of-the-art applications. By joining Progression, you'll benefit from a C/C++ SDK, DirectShow filters, source code for demo applications, conversion utilities and setup tools.

## The Best Choice for System Integration and OEM

VideoPlex is the ideal solution for point-of-sale, point-of-information, video-on-demand, ad insertion and video wall applications. It is designed for integration into professional video markets that require the most reliable MPEG playback technology.



## Features

- Composite and S-Video outputs
- Balanced and unbalanced audio outputs
- Genlock input
- MPEG audio
- MPEG-1 System, MPEG-2 Program and Transport streams
- Windows 95 and Windows NT 4.0
- DirectShow 2.0 in Pull and Push modes
- Full CCIR-601 resolution





# VIDEO P L E X™



## TECHNICAL SPECIFICATIONS

### Decoding Specifications

VideoPlex accepts the following file formats:

- MPEG-1 System •
- MPEG-2 Program •
- MPEG-2 Transport •
- Video only files (MPEG-1 and MPEG-2) •
- Audio only files •



### Video

Genlock input with video pass-thru

Standard Compliance - ISO 11172 (MPEG-1); ISO 13818 (MPEG-2)

Resolutions	NTSC	fps	Resolutions	PAL	fps
MPEG-2 Full D-1	704x480	29.97	MPEG-2 Full D-1	704x576	25
MPEG-2 Half D-1	352x480	29.97	MPEG-2 Half D-1	352x576	25
MPEG-1 SIF	352x240	29.97	MPEG-1 SIF	352x288	25

### Audio

MPEG Audio Layer II

Sampling frequency	32, 44.1, 48 kHz
Channels	1-2
Frequency response	20Hz-20kHz, +/-0.5dB
Balanced stereo out	OVU=+4dBm

16 bit audio D/A

Software adjustable audio output levels

### Physical Interfaces

- Composite video out (BNC) & S-Video out (Mini-DIN) •
- Genlock input (BNC) •
- Unbalanced stereo analog audio output (3.5 mm mini jack) •
- Balanced audio out (Mini-DIN) •
- PCI 2.01 compliance •

### Software

- DirectShow 2.0 with support for Push and Pull stream delivery modes •
- DirectShow Filter auto-detects, de-multiplexes and plays back MPEG clips •
- ActiveX client support for Optibase's MPEG ComMotion UDP •
- Drivers for Windows 95 and Windows NT 4.0 •
- Multiple board software support •
- 3rd party network client support: Oracle OVS 3.04 and higher, SGI Media Base, MS NetShow Theater 3.0 •

### Physical Size

Full size PCI expansion card (12.28"x4.2")

### For Progression Developers

- Full control of board functionality through a C API •
- User Buffer mode support within the SDK •
- C and Visual Basic demo source code •
- DirectShow Developer Support •
- MCI support through DirectShow 2.0 •

### Certifications

- CE- Class B •
- FCC Class A •

### System Requirements

- A PC with a Pentium processor and a PCI bus •
- 1 full size free PCI slot •
- 16 MB RAM •
- Windows 95 or Windows NT 4.0 Service Pack 3 •

(These requirements may vary depending on the application and the number of VideoPlex boards installed on the same PC.)

©1998 Optibase, Optibase Inc and VideoPlex are registered trademarks of Optibase. Other product names mentioned herein are used for identification purposes only and may be trademarks of their respective companies.

Optibase Inc.  
3031 Tisch Way, Plaza West, Suite 1,  
San Jose, CA 95128 USA  
Tel: +1-800-451-5101, +1-408-260-6760  
Fax: +1-408-244-0545  
Email: sales@optibase.com

Optibase Ltd.  
91 Medinat Hayehudim St.,  
Herzlia, 46766 Israel  
Tel: +972-9-9599-200  
Fax: +972-9-9586-099  
Email: sales@optibase.co.il

Optibase Europe  
Pew Hill House, Pew Hill  
Chippenham, Wiltshire, SN15 1DN, UK  
Tel: +44-1249-460066  
Fax: +44-1249-461066  
Email: sales@optibase.co.uk

Web: <http://www.optibase.com>

